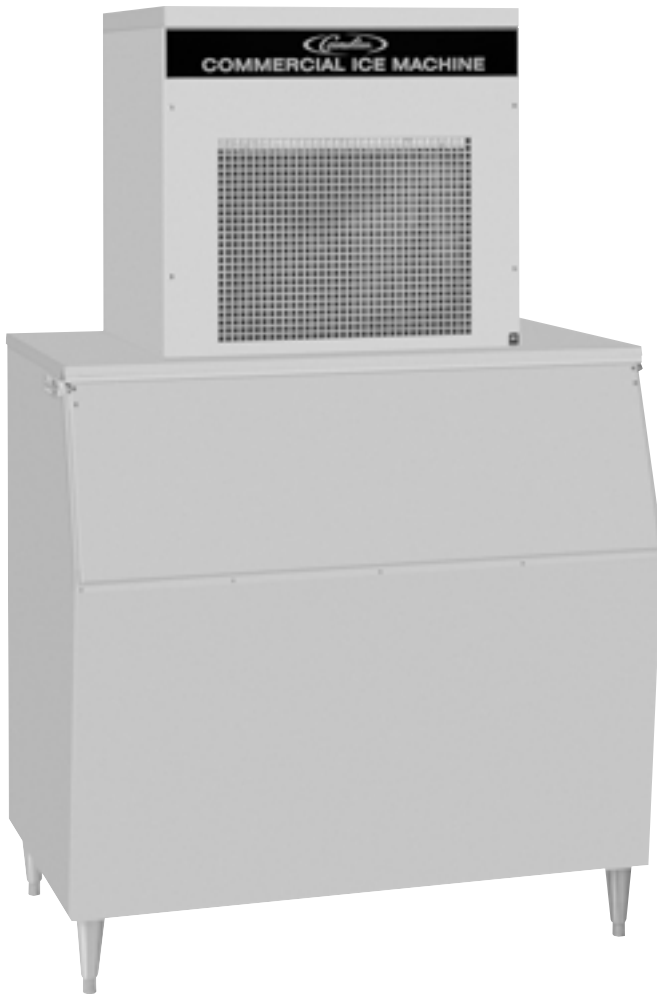




WCC-2001

Continuous Compressed Ice Maker



Features:

- CFC-free, R-404A refrigerant
- Ice maker uses 100% of water
- Quality “chewable” ice
- Patented design - easy to perform preventative maintenance
- Fewer moving parts, eliminates the use of water pumps, hot gas solenoids, timers and noisy harvest cycles

- Options:
 - Air cooled, water cooled, or remote cooled
 - Water conditioning kit
 - Water inlet kit
 - Storage bins



Technical Specifications:

Compressor: 2 H.P.

Refrigerant: CFC-Free, R-404A

Voltage: 208-230/60

Minimum Circuit Amps: 25

Ice Production Capacity (60 cycle):

1735 lbs. per day @70°F Air/50°F Water (788 kgs. @
21.09°C Air/10.0°C Water)
(50 cycle is 1446 lbs. (656 kgs.) per day)

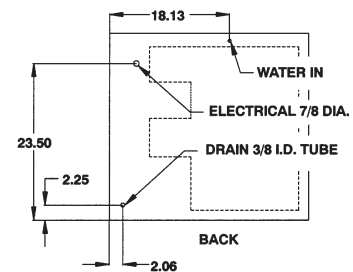
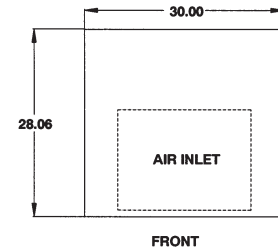
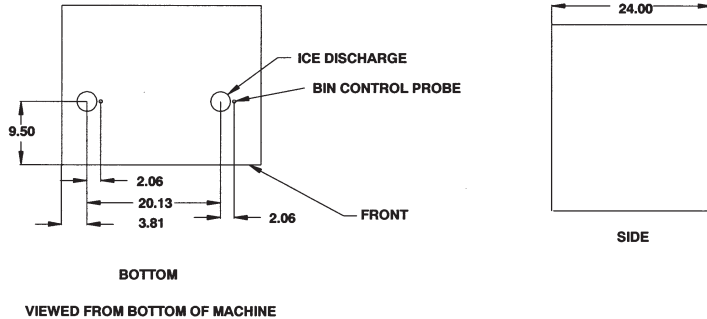
Cabinet Construction: Stainless steel

Dimensions:

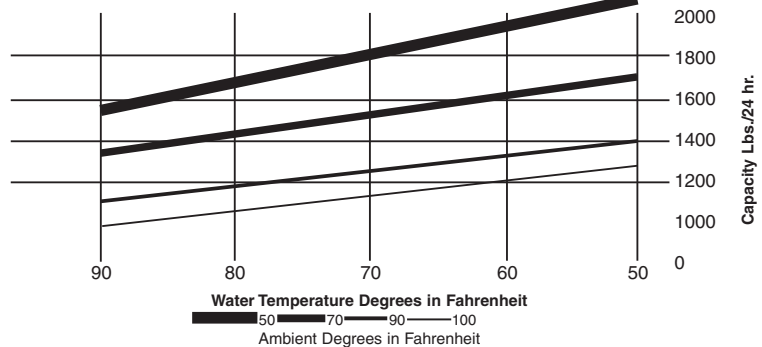
30" (76.2 cm) wide
24" (60.96 cm) deep
28" (71.12 cm) high

Shipping Weight: 342 lbs. (155 kgs.)

Agency Listings:



Ice making capacities



Part No.	Model No	Standard Electrical	Condenser	Production 70°/50° lbs/kgs	Shipping Weight lbs/kgs	Operating Weight lbs/kgs	Voltage Range
569200081	WCC-2001A	208-230/60/1	Air	1735 lbs/788 kgs	342 lbs/155 kgs	317 lbs/ 144kgs	198-253V
564200338	WCC-2001W	208-230/60/1	Water	1735 lbs/788 kgs	342 lbs/155 kgs	317 lbs/ 144kgs	198-253V
569200340	WCC-2001R	208-230/60/1	Remote	1735 lbs/788 kgs	342 lbs/155 kgs	317 lbs/ 144kgs	198-253V
569200336	WCC-2002A	220-240/50/1	Air	1446 lbs/656 kgs	342 lbs/155 kgs	317 lbs/ 144kgs	209-264V



For more information or to place an order, contact your sales representative or authorized distributor.

In the US:

Phone: 1-800-238-3600

Fax: 1-800-535-4235

Outside the US:

Phone: 1-763-421-6120

Fax: 1-763-422-3297

IMI Cornelius Inc.

One Cornelius Place
Anoka, MN 55303-6234
USA